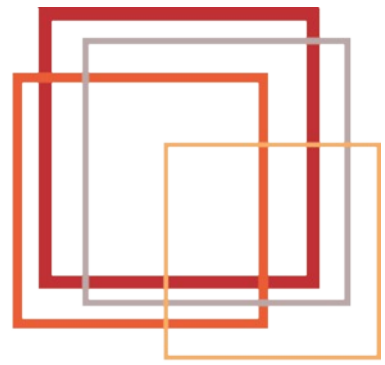


valley blinds



Contract specialists in blinds/curtains/cubicle tracks.

Vertical Louvre Blinds



Valley Blinds, Star House, Star Road, Hillingdon, Middlesex, UB10 0QH
tel: 020 8561 9187 - fax: 020 8561 0890
email: mail@valleyblinds.co.uk - web: www.valleyblindsonline.co.uk

Valley Blinds

All Valley blinds are carefully built to exacting standards, to give years of trouble-free service. The superior design features and quality components enable them to be confidently specified for the most demanding applications. Valley blinds are designed for intensive use and are frequently to be seen in busy public areas such as hospitals and schools, as well as commercial and residential environments.

The Valley Blinds vertical blind programme is one of the most comprehensive available, ranging from slim premium profiled units to heavy-duty electrically controlled blinds.

The Valley Blinds fabrics programme encompasses a vast range of fabrics, all of which are flame-retardant to government standards. Fabric types include dim-out, black-out, solar reflective, sunscreen and solar film.

Valley blinds are available through a nationwide network of customers / dealers, with experienced installation and service teams providing an unrivalled level of support.

Maintenance

Valley Blinds vertical blinds are designed to require low maintenance. The headrails and components are made from durable materials and will not corrode in normal use. In the event of damage most components are easily replaceable.

Internal surfaces of headrails may be lubricated if necessary with a light application of silicone spray. Louvre fabrics have high mechanical and dimensional stability and colour fastness. Some ranges are fully washable.



Size Limitations

Based on fabric weight of 170g/m², e.g. Tay

Use of heavier fabrics may require appropriate reductions

		Min Width	Max Width	Max. Drop	Max m ²
VL30	Premium profiled headrail	300	4550	3200	10.5
VL31	Premium profiled headrail	300	4550	3200	10.5
VL36	Overhead twin rack	300	2550	1550	4.0
VL60	Bead chain mono control	300	4550	3200	14.5
VL64	Crank mono control	300	4550	3200	14.5
VL65	Electric operation	400	4550	3200	14.5

VL30 Premium profiled vertical blind



The VL30 is available on the Kestrel Magnetic Anti-Ligature System as an anti-ligature blind for the prevention of patient self-harm in mental health areas. For further information contact Valley Blinds.

For more information on this system see page 6.

Features: 40 x 25mm premium profiled white aluminium headrail with top-fix brackets and wheeled carrier trucks. The constant transport of the louvers is guaranteed by the precision made aluminium spindle shaft. Bead-chain operation with built in slip clutch for louver tilt. 127mm/89mm/63mm louvres available with weights and white stabilising chain.

Benefits: Robust with high quality performance, yet remains pleasing to the eye. The compressive truck options satisfy the most demanding of environments whether it be residential or commercial.

Options: VL31 wand control; Spring metal trucks; Enclosed weights; VL30S sloping; Face fix brackets.

Specification: Valley Blinds VL30 vertical blind as manufactured by Valley Blinds.

40 x 25mm white headrail with bead-chain tilt control and cord draw.

Replaceable truck hooks or spring metal truck hooks, with 127/89/63mm louvres in flame-retardant fabric from the Valley Blinds range, complete with louver weights and white stabilising chain.

Please refer to NBS Plus (N1 0 240)

Unique options

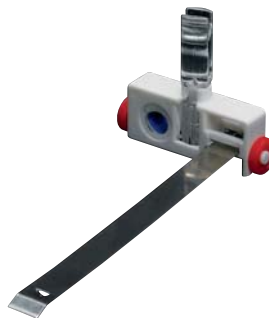
Option 1: Wand Control

Ideal for child care as this reduces the risk of strangulation and patient self harm.



Option 2: Replaceable Truck Hooks

Should the trucks break due to unforeseen circumstances, truck inserts can be simply removed and replaced.



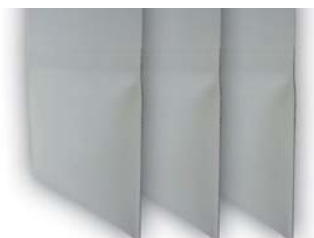
Option 3: Spring Metal Trucks Hooks

Ideal for areas where blinds do not get the respect they are due. The metal hook is almost unbreakable and extends and retracts should excess pull be applied to the louver.



Option 4: Enclosed Weights

Reduces the risk of strangulation and patient self harm, whilst also providing an easy cleanable product as no weights and chains on the louvres are required.



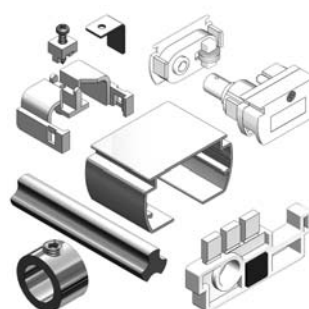
Option 5: Kestrel

The VL30 is the only dual control vertical blind that is approved for the Kestrel Magnetic Anti-Ligature System.



Option 6: Component Form

This product is available in not only made to measure form from Valley Blinds, but in component form also.



Option 7: Unique Slim Stacking

The VL30 system boasts the smallest stacking of louvres. This excellent feature gives optimum light when open and gives the system a sleek and streamlined appearance.



VL60 Bead-chain mono control



The VL60 is available on the Kestrel Magnetic Anti-Ligature System as an anti-ligature blind for the prevention of patient self-harm in mental health areas. For further information contact Valley Blinds. For more information on this system see page 7.

Features: 45 x 36.5mm white aluminium headrail with top-fix brackets and wheeled carrier trucks. The constant transport of the louvres is guaranteed by a precise aluminium spindle shaft. Bead-chain operation with built in slip clutch for both louvre tilt and draw. 127mm/89mm louvres with weights and white stabilising chain.

Benefits: The VL60 offers the ease of mono control – a comfortable change gear with large chain wheel cares for continuous transport and automatically switches from tilting to traversing. By pulling the ball chain the louvres tilt and then traverse.

The strong headrail and wheeled carrier trucks are designed to withstand the rigours of intensive use, whilst the ingenious mechanism allows precise control of light transmission. A long-lasting blind, delightfully simple to operate.

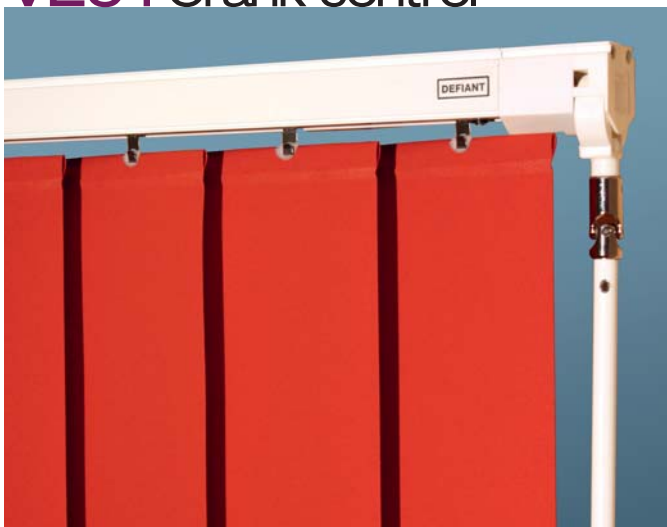
Options: VL60S sloping headrail versions; Face fix brackets; Extension brackets; Enclosed weights.

Specification: Valley Blinds VL60 vertical blind as manufactured by Valley Blinds.

45 x 36.5mm white headrail with bead chain mono control. 127/89mm louvres in flame-retardant fabric from the Valley Blinds range, complete with louvre weights and white stabilising chain.

Please refer to NBS Plus (N1 0 240)

VL64 Crank control



The VL64 is available on the Kestrel Magnetic Anti-Ligature System as an anti-ligature blind for the prevention of patient self-harm in mental health areas. For further information contact Valley Blinds. For more information on this system see page 7.

Features: 45 x 36.5mm white aluminium headrail with top-fix brackets and wheeled carrier trucks. The constant transport of the louvres is guaranteed by a precise aluminium spindle shaft. Fixed crank operation with built in slip clutch for both louvre tilt and draw. 127mm/89mm louvres with weights and white stabilising chain.

Benefits: The VL64 offers the ease of mono control – a comfortable change gear to ensure the continuous transport and automatically switches from tilting to traversing. By turning the crank handle the louvres tilt and then traverse.

The strong headrail and wheeled carrier trucks are designed to withstand the rigours of intensive use, whilst the ingenious mechanism allows precise control of light transmission. A long-lasting blind, delightfully simple to operate.

Options: VL64S sloping headrail versions; Face fix brackets; Extension brackets; Enclosed weights; Detachable crank.

Specification: Valley Blinds VL64 vertical blind as manufactured by Valley Blinds.

45 x 36.5mm white headrail with crank operation mono control. 127/89mm louvres in flame-retardant fabric from the Valley Blinds range, complete with louvre weights and white stabilising chain.

Please refer to NBS Plus (N1 0 240)

VL65 Electric draw and tilt 240v AC



Features: 45 x 36.5mm white aluminium headrail with top-fix brackets and wheeled carrier trucks. The constant transport of the louvres is guaranteed by a precise aluminium spindle shaft. Electric 240V operation with built in slip clutch for both louvre tilt and draw. 127mm/89mm louvres with weights and white stabilising chain. Single or split draw

Benefits: The VL65 offers the ease of mono control – a precision driven gearbox to ensure continuous transport and automatically switches from tilting to traversing. By operating the control switch the louvres tilt and then traverse. The strong headrail and wheeled carrier trucks are designed to withstand the rigours of intensive use, whilst the ingenious mechanism allows precise control of light transmission. A long-lasting blind, delightfully simple to operate.

Options: VL65S sloping headrail versions; Face fix brackets; Extension brackets; Enclosed weights; Radio Remote control; Group control.

Specification: Valley Blinds VL65 vertical blind as manufactured by Valley Blinds.

45 x 36.5mm white headrail with 240V electric operation mono control. 127/89mm louvres in flame-retardant-fabric from the Valley Blinds range, complete with louvre weights and white stabilising chain.

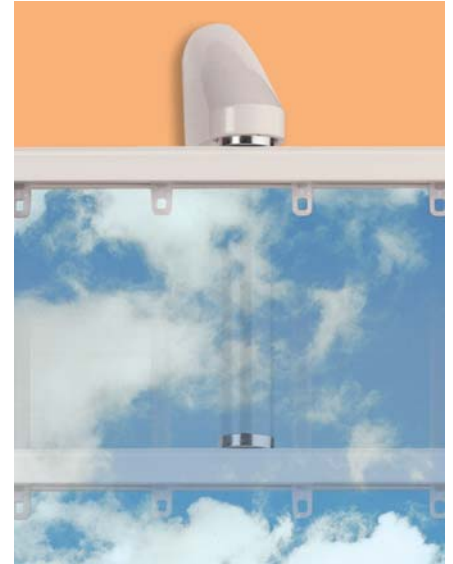
Please refer to NBS Plus (N10 240)



Kestrel

The patented Kestrel system is simple and extremely effective. It will securely hold a range of items by powerful short range magnetic attraction. When an abnormal load is applied the magnetic force is overcome and releases its load. And it can do this time after time. There will be no decline in performance, and as there is no mechanical restraint at all, nothing can jam, break or wear out. After an incident, all that is required is for the suspended item to be held immediately below the magnetic brackets. The magnetic force will then raise the item and click it into its correct position.

The Kestrel Magnetic Anti-Ligature System is available on the following three vertical blind systems.



Size Limitations

Based on fabric weight of 170g/m², e.g. Tay
Use of heavier fabrics may require appropriate reductions

	Min Width	Max Width	Max. Drop	Max m ²
KVL31	300	3050	3200	4.0
KVL60	300	3050	3200	4.0
KVL64	300	3050	3200	4.0

KVL31



Kestrel: The KVL31 is specially adapted using the Kestrel Magnetic Anti-Ligature System so as to make it suitable for use in areas of self harm and mental health.

Features: 40 x 25mm premium profiled white aluminium headrail with top-fix brackets and wheeled replaceable truck hooks.

The constant transport of the louvres is guaranteed by the precision made aluminium spindle shaft. Wand control operation with built in slip clutch for louvre tilt. 127mm/89mm/63mm louvres with weights and white stabilising chain.

Benefits: Robust with high quality performance, yet remains pleasing to the eye. The compressive truck options satisfy the most demanding of environments whether it be residential or commercial.

Options: Face fix brackets; Enclosed weights.

Specification: Valley Blinds KVL31 vertical blind with Kestrel Magnetic Anti-Ligature System as manufactured by Valley Blinds.

40 x 25mm white headrail with wand control operation and built in slip clutch for louvre tilt. Replaceable truck hooks or spring metal truck hooks, with 127/89/63mm louvres in flame-retardant fabric from the Valley Blinds range, complete with louvre weights and white stabilising chain.

Please refer to NBS Plus (N1 0 240)

KVL60 Bead-chain mono control



Kestrel: The KVL60 is specially adapted using the Kestrel Magnetic Anti-Ligature System so as to make suitable for use in areas of self harm and mental health.

Features: 45 x 36.5mm white aluminium headrail with top-fix brackets and wheeled carrier trucks. The constant transport of the louvres is guaranteed by a precise aluminium spindle shaft. Bead-chain operation with built in slip clutch for both louvre tilt and draw. 127mm/89mm louvres with weights and white stabilising chain. Single or split draw.

Benefits: The KVL60 offers the ease of mono control – a comfortable change gear with large chain wheel cares for continuous transport and automatically switches from tilting to traversing. By pulling the ball chain the louvres tilt and then traverse.

The strong headrail and wheeled carrier trucks are designed to withstand the rigours of intensive use, whilst the ingenious mechanism allows precise control of light transmission. A long-lasting blind, delightfully simple to operate.

Options: Face fix brackets; Enclosed weights.

Specification: Valley Blinds KVL60 vertical blind with Kestrel Magnetic Anti-Ligature System as manufactured by Valley Blinds.

45 x 36.5mm white headrail with bead chain mono control. 127/89mm louvres in flame-retardant fabric from the Valley Blinds range, complete with louvre weights and white stabilising chain.

Please refer to NBS Plus (N1 0 240)

KVL64 Crank control



Kestrel: The KVL64 is specially adapted using the Kestrel Magnetic Anti-Ligature System so as to make suitable for use in areas of self harm and mental health.

Features: 45 x 36.5mm white aluminium headrail with top-fix brackets and wheeled carrier trucks. The constant transport of the louvres is guaranteed by a precise aluminium spindle shaft. Fixed crank operation with built in slip clutch for both louvre tilt and draw. 127mm/89mm louvres with weights and white stabilising chain. Single or split draw.

Benefits: The KVL64 offers the ease of mono control – a comfortable change gear to ensure the continuous transport and automatically switches from tilting to traversing. By turning the crank handle the louvres tilt and then traverse.

The strong headrail and wheeled carrier trucks are designed to withstand the rigours of intensive use, whilst the ingenious mechanism allows precise control of light transmission. A long-lasting blind, delightfully simple to operate.

Options: Face fix brackets; Extension brackets; Enclosed weights; Detachable crank.

Specification: Valley Blinds KVL64 vertical blind with Kestrel Magnetic Anti-Ligature System as manufactured by Valley Blinds.

45 x 36.5mm white headrail with crank operation mono control. 127/89mm louvres in flame-retardant fabric from the Valley Blinds range, complete with louvre weights and white stabilising chain.

Please refer to NBS Plus (N1 0 240)



Valley Blinds, Star House, Star Road, Hillingdon, Middlesex, UB10 0QH
tel: 020 8561 9187 - fax: 020 8561 0890
email: mail@valleyblinds.co.uk - web: www.valleyblindsonline.co.uk